



PROPOSED SOUTH WEST ELEVATION



PROPOSED NORTH WEST ELEVATION



PROPOSED SOUTH EAST ELEVATION



PROPOSED NORTH ELEVATION

**NOTES:**

The copyright © of this drawing is vested in the Architect and must not be copied or reproduced without consent.  
 All Contractors must visit the site and be responsible for taking and checking dimensions relative to their work. Sutton and Wilkinson Chartered Architects to be advised of any variation between drawings and site conditions.  
 DO NOT SCALE OFF THIS DRAWING... IF IN DOUBT ASK

Material Key	
1	Facing brickwork Type One stretcher bond (to LPA Approval)
2	Facing brickwork Type Two stretcher bond (to LPA Approval)
3	Facing brickwork Type Three stretcher bond (to LPA Approval)
4	Alternate courses of feature brickwork projected 20mm
5	Grespania (or similar approved) cladding adhered to blockwork sub-strate
6	Powder Coated Double Glazed Aluminium/ Timber Composite Windows & Doors
7	Aluminium Powder Coated Curtain Walling
8	Powder Coated Aluminium Sliding Solar Shades/ Screens
9	Pressed Metal Powder Coated Capping
10	Dale (or similar approved) Aluminium Stepped Systems Fascia & S.F Soffit
11	Glazed Balcony System with Coloured Nylon Coated Handrail & varying levels of opacity
12	Standing Seam Aluminium roof system
13	Cantilevered Steel Balcony Structure
14	Square Powder Coated Marley Alutec (or similar) Rainwater Downpipes
15	Single Ply Roof laid to falls with Fall Arrest System
16	Powder Coated Aluminium Glazed Atrium
17	Glass Fibre Reinforced Concrete (GRC) Stone Coated Projecting Boxed Features (Anthracite Grey)
18	Paved terrace with raised planting beds & tree pits
19	Trespa Meteoron panels system secret fixed.

REV.	AMENDMENT:	INT.	DATE
A	ELEVATIONS UPDATED IN LINE WITH LPA REQUIREMENTS	AMB	10.09.20

**PLANNING**

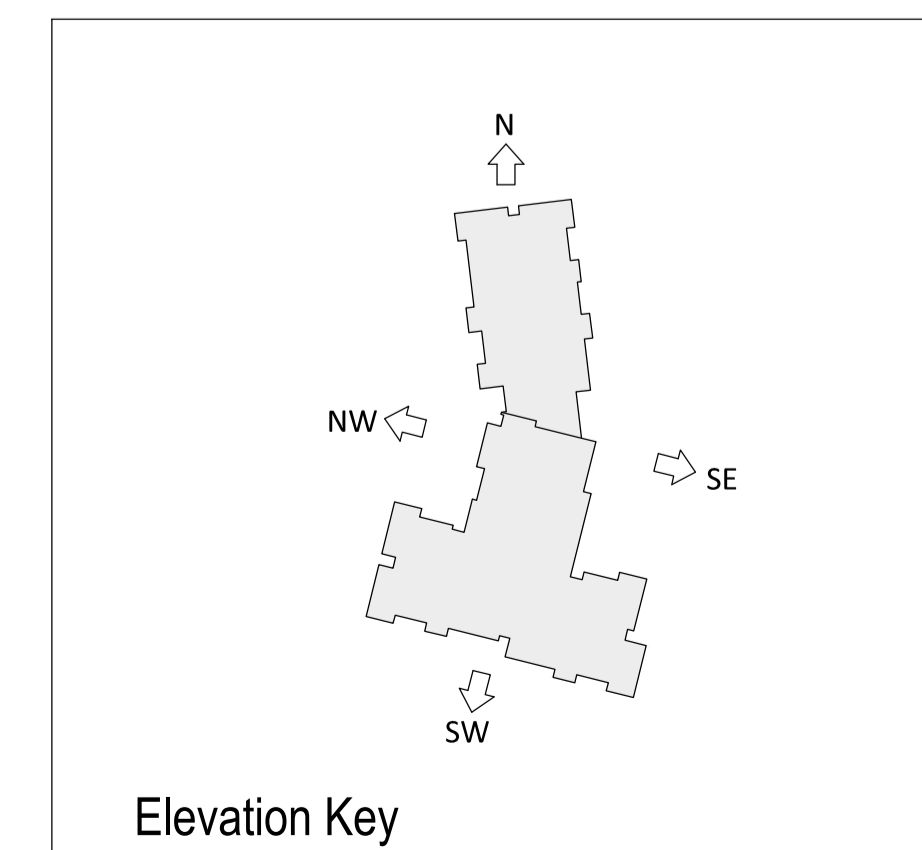
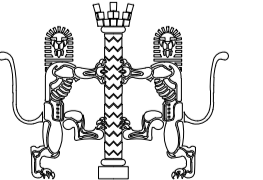
PROJECT:  
 REDEVELOPMENT OF HAUGHMOND COURT  
 WELLINGTON  
 TELFORD

CLIENT:  
 Wrekin Housing Trust

TITLE:  
 PROPOSED ELEVATIONS  
 EXTRA CARE

**SUTTON AND WILKINSON**  
 CHARTERED ARCHITECTS

Victoria House, 13 New Penkridge Road,  
 Cannock, Staffs, WS11 1HW  
 Telephone: 01543 466441  
 Facsimile: 01543 462469  
 e-mail: office@suttonwilkinson.co.uk



SCALE	DRAWN	DATE	SIZE
1:200	VL	Feb 20	A1
DRAWING NUMBER		REVISION	
2444 - 28		A	